

Gardiner Farms, Inc.



- Facility: **Cattle feedlot**
- Location: **Kirkton, Ontario, Canada**
- Total System Size: **250 kWe**
- Fuel Type: **Biogas from animal waste**
- Power Source: **Caterpillar® naturally aspirated engines**
- Hot Water Output: **Approx. 1,710,000 Btu/hour**
- Overall System Efficiency: **> 80%**

Elite's CHP EnviroGen® Energy Module Fuel Source



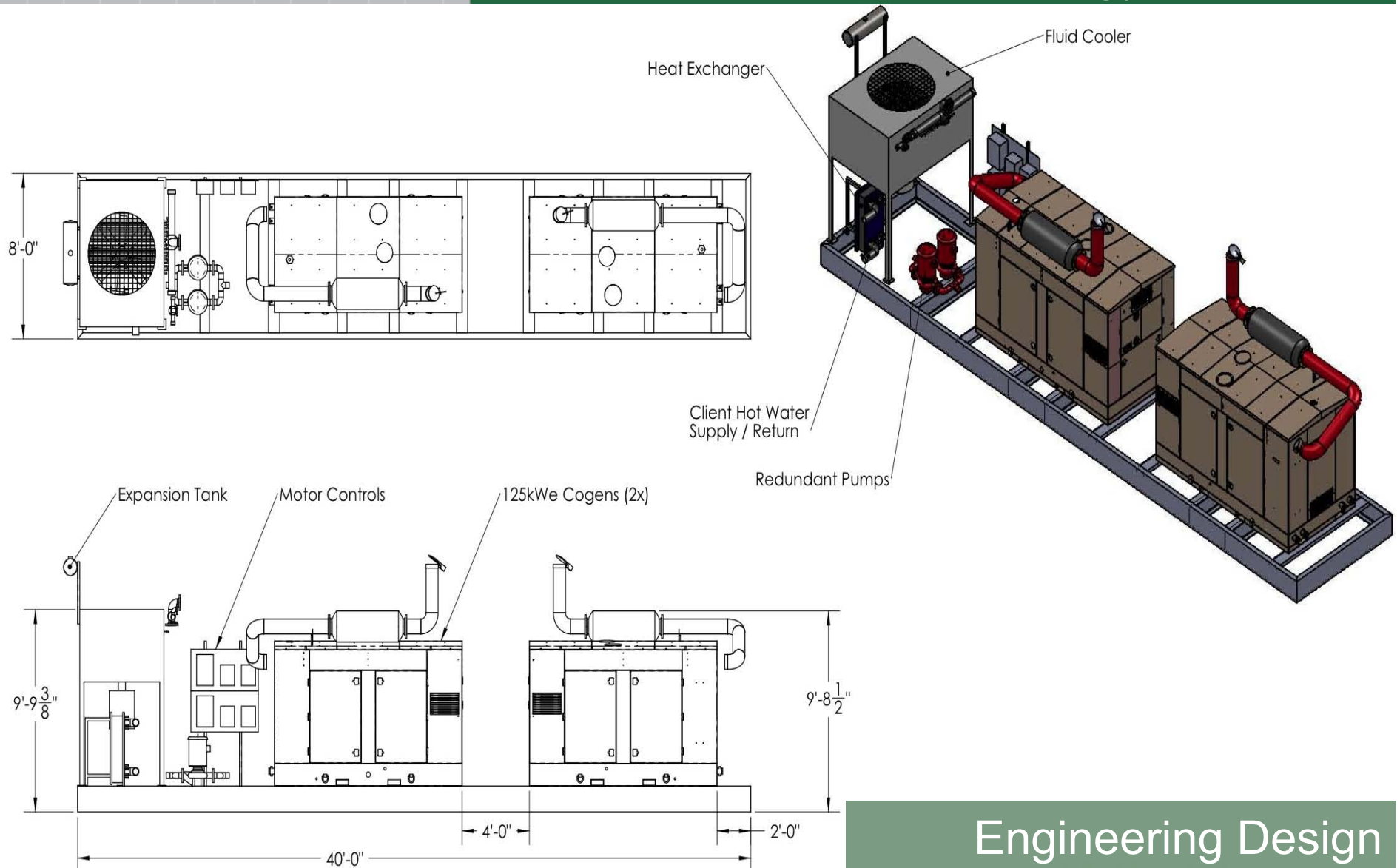
Survey of Job Site

All Farm Operations and Private
Residences to be Powered by CHP



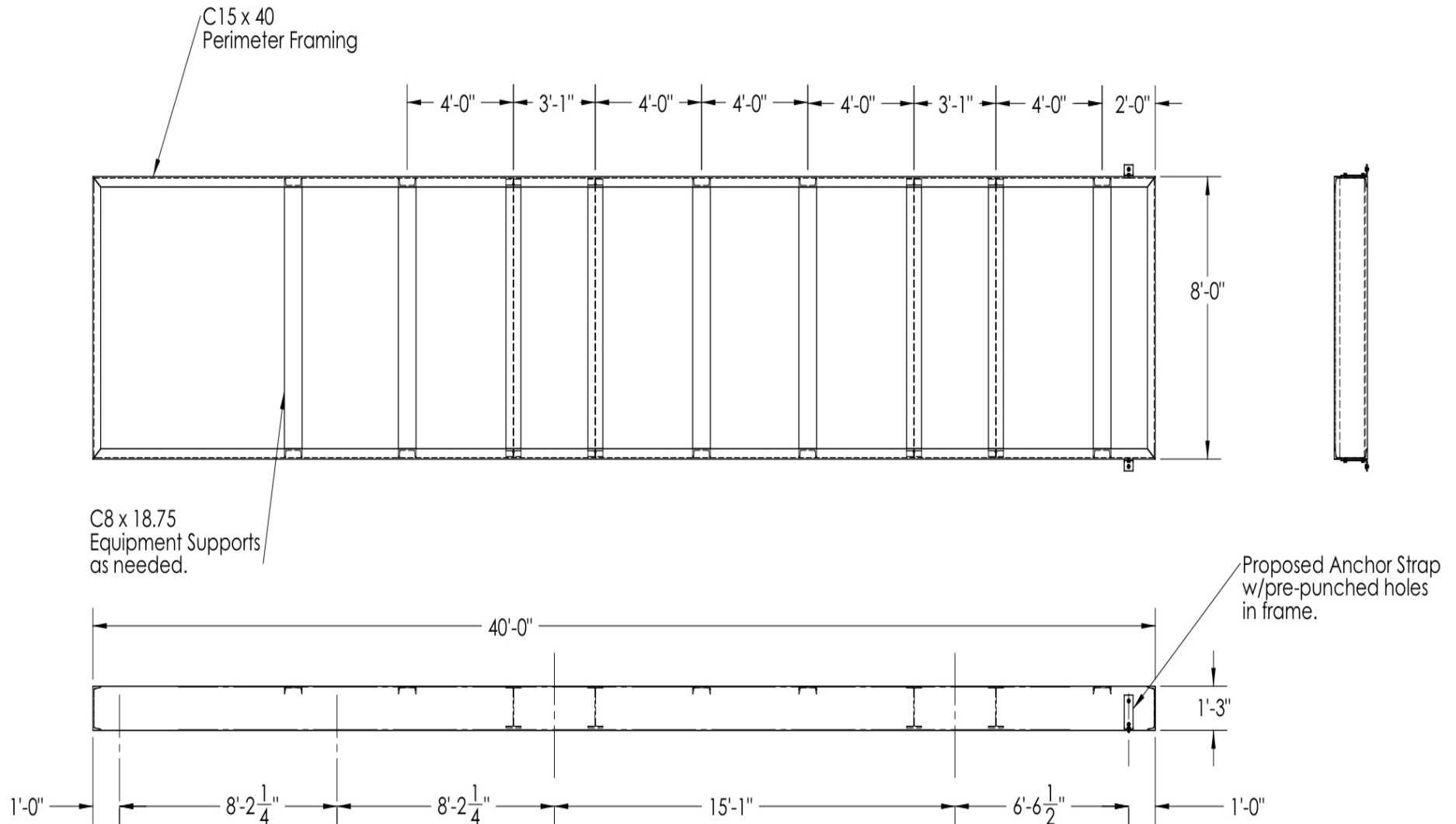
Survey of Job Site

Preliminary Drawing of Digester Gas Fueled EnviroGen® Energy Modules

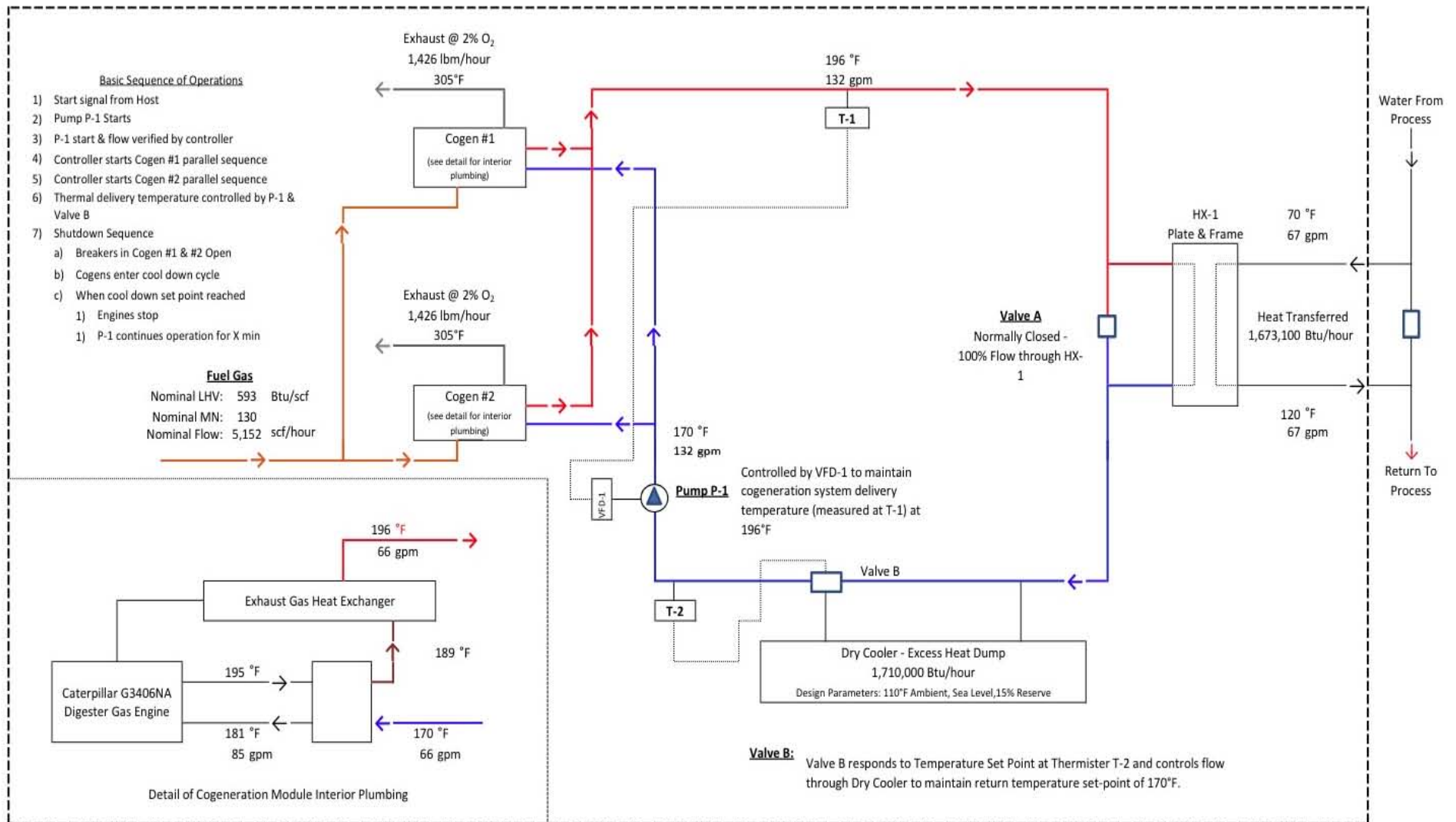


Engineering Design

Preliminary Drawing Seismically Reinforced Skid Frame



Combined Heat and Power (CHP) System Schematic



Biodigester Construction Pouring the Concrete



Preparation of Job Site

Biodigester Construction Insulating the Walls



Preparation of Job Site

Biodigester Construction Near Completion



Preparation of Job Site

Support Skid Base Frame



Fabrication/Assembly

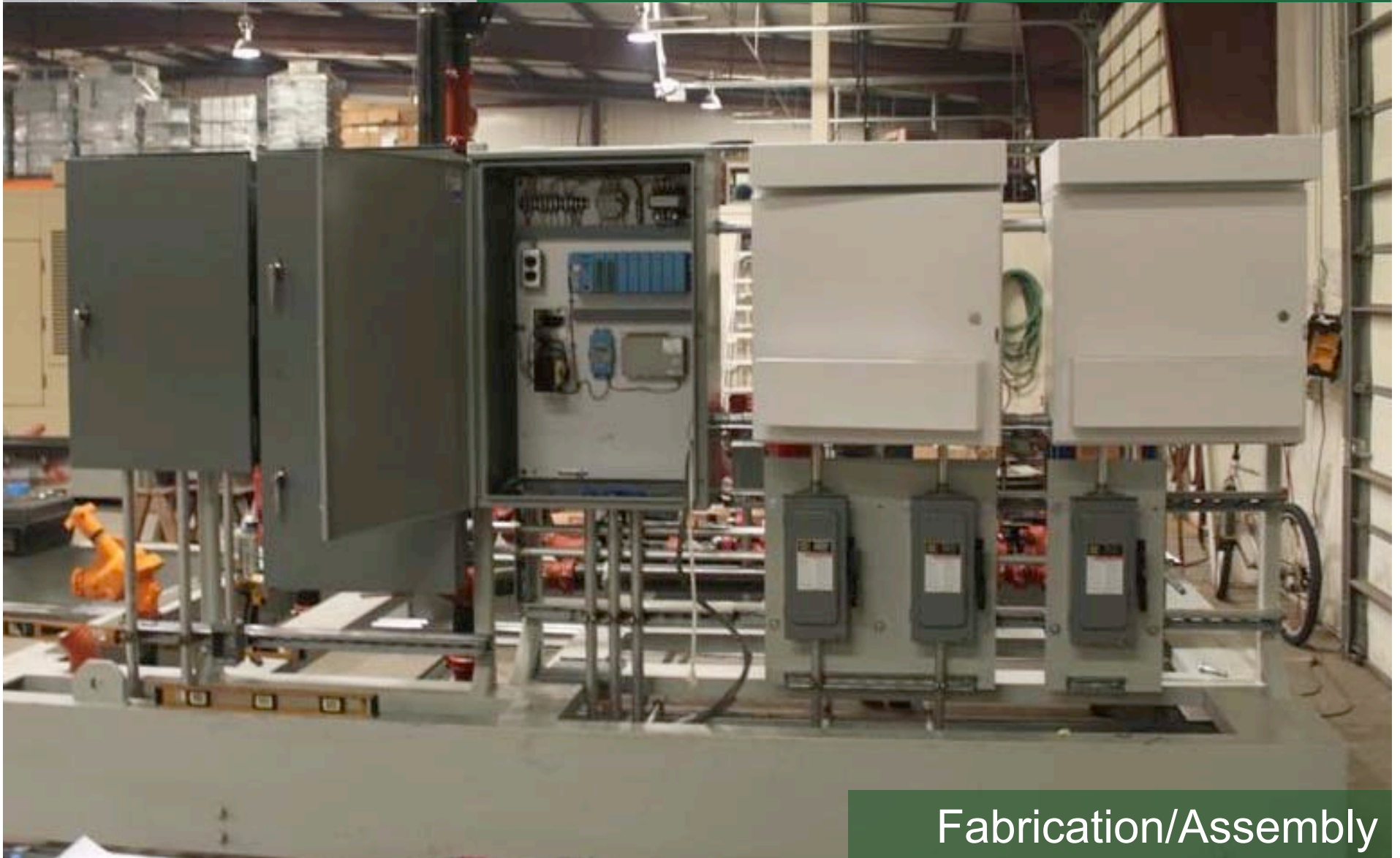
Customized Water Inlet and Outlet with Heat Exchanger Piping and Pumps



Fabrication/Assembly

ELITE
ENERGY

Breakers and Controls – One Part of the Fully Integrated Skid System



Fabrication/Assembly

ELITE
ENERGY

Caterpillar 3406 Naturally Aspirated Engine in EnviroGen® Energy Module



Fabrication/Assembly

ELITE
ENERGY

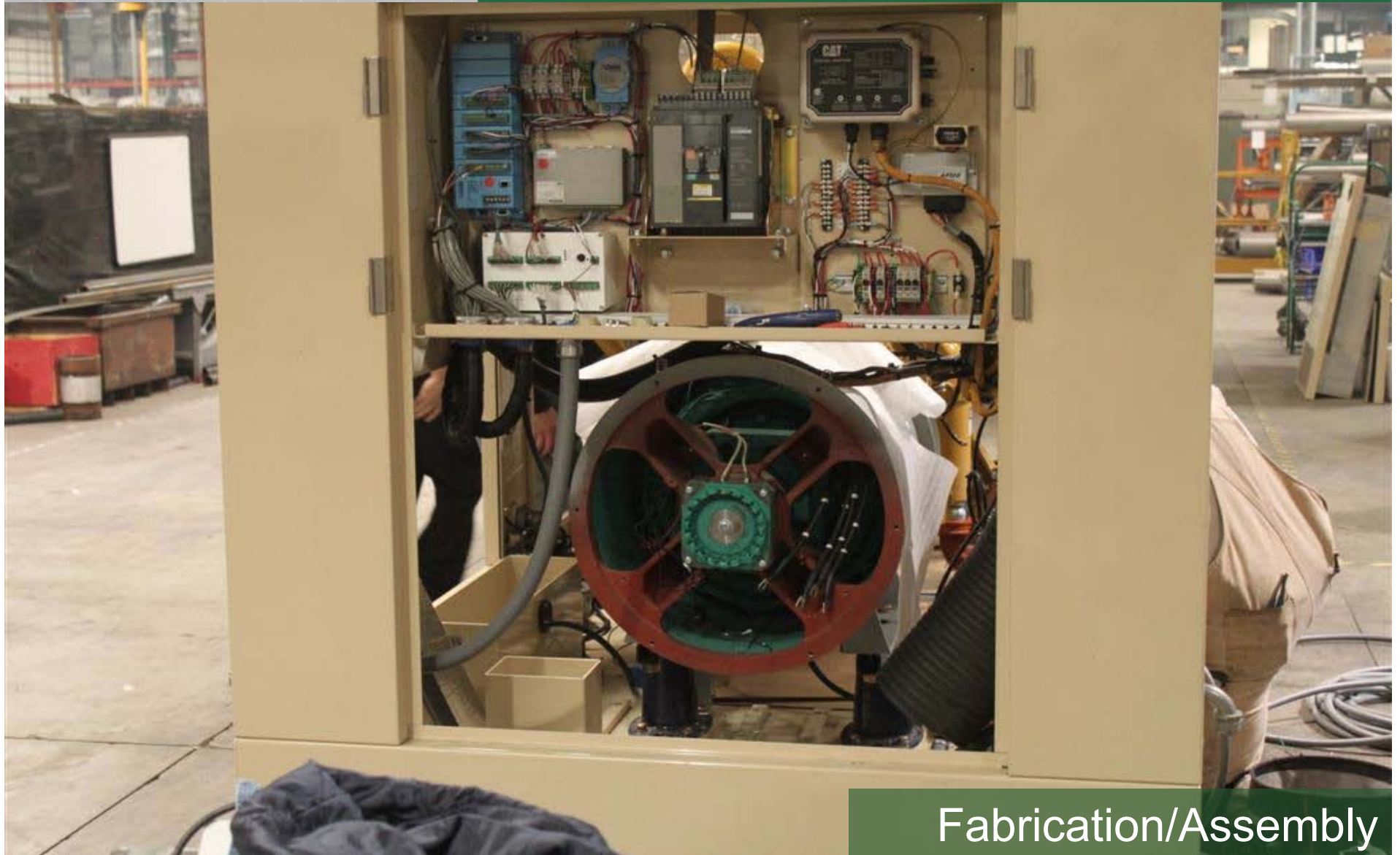
Two Energy Efficient 125 kW EnviroGen® Energy Modules



Fabrication/Assembly

ELITE
ENERGY

Controls Cabinet and Generator in EnviroGen® Energy Module



Fabrication/Assembly

Finished EnviroGen® Energy Modules Ready to Mount on Skid Frame



Fabrication/Assembly

**ELITE
ENERGY**

Powder Coated, Weather Tight, Sound
Attenuated Enclosures



Fabrication/Assembly

**ELITE
ENERGY**

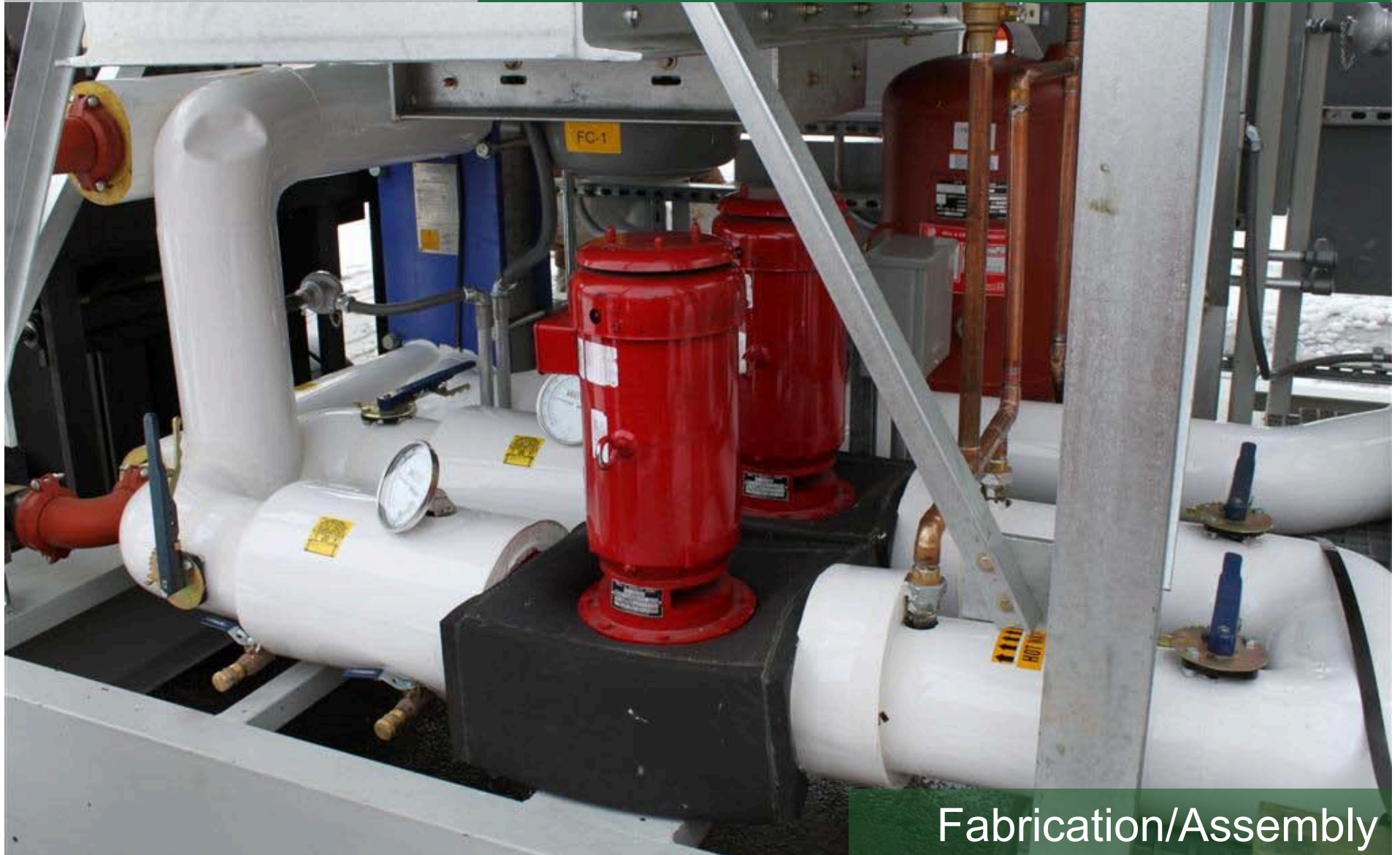
Lift-off Doors and Removable Panels
Provide Easy Access



Fabrication/Assembly

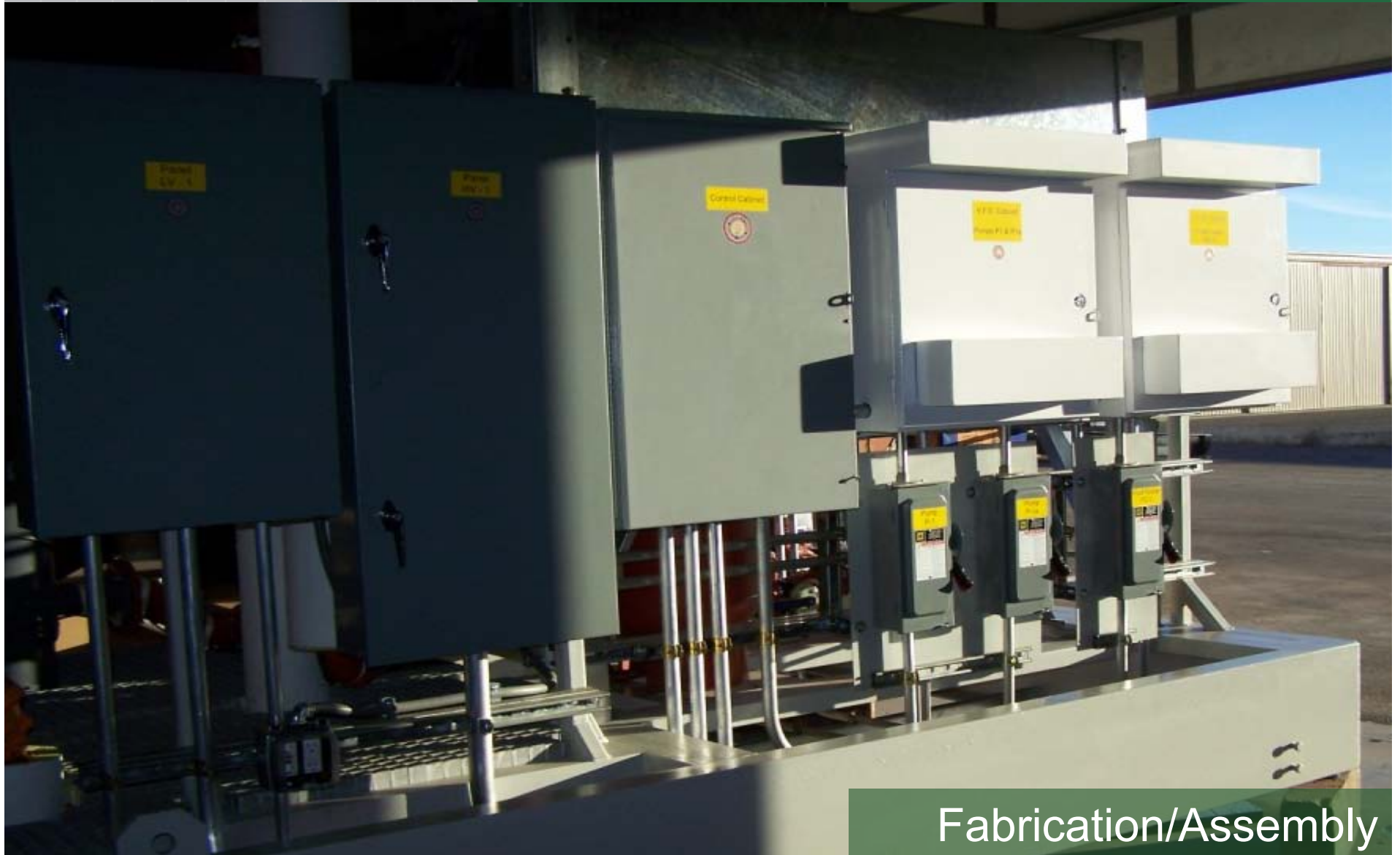
ELITE
ENERGY

Finished Piping and Pumps for Hot Water Circulation



Fabrication/Assembly

Finished Control Panels and Pump Disconnect Switches



Fabrication/Assembly

ELITE
ENERGY

GenView™ Control System for Remote Monitoring and Control



Fabrication/Assembly

**ELITE
ENERGY**

Lifting the CHP System at Elite's 70,000
sq. ft. Manufacturing Campus in Nevada



Loading for Transit

**ELITE
ENERGY**

Loading the CHP System on Flatbed for Transport



Loading for Transit

**ELITE
ENERGY**

Centering the CHP System for Transport to Ontario, Canada



Loading for Transit

**ELITE
ENERGY**

CHP System Loaded and Ready for
Transport to Job Site from Nevada, USA



Loading for Transit

Preparing for Installation of CHP System at Cattle Feedlot



At the Job Site

Installed CHP System on Foundation Next to Biodigester at Farm



At the Job Site

**ELITE
ENERGY**

CHP System Ready to Provide Heat
and Power for All Farm Operations



At the Job Site

Project 2010

ELITE ENERGY

Provided a CHP system to: Gardiner Farms, Inc.

System powered by:



**All major components and
97% of system content is:**



Gardiner Farms, Inc. (recap)

- Facility Type: **Cattle Feedlot**
- Location: **Kirkton, Ontario, Canada**
- Total System Size: **250 kWe**
- Fuel Type: **Biogas from animal waste**
- Power Source: **Caterpillar® naturally aspirated engines**
- Hot Water Output: **Approx. 1,710,000 Btu/hour**
- Overall System Efficiency: **> 80%**

Gardiner Farms, Inc.

- To schedule a site walk of this project (in Kirkton, Ontario, Canada) please contact:

Paul Beck – National Accounts Manager
pbeck@eliteenergysys.com, 619-518-0447

- To schedule a tour of our manufacturing, engineering, fabrication, and test facilities in Carson City, Nevada please contact:

Kirk Fowkes – VP of Sales and Business Development
kfowkes@eliteenergysys.com, 916-467-6606